



35 Dart Walk, Exeter, EX2 7QF
To Let £1,000 PCM

robson
lettings
Dedicated Lettings & Property Advisers

- Newly Decorated
- Allocated Parking
- No through traffic
- Two Bedrooms
- Superb Location
- Available Immediately

THE PROPERTY

This newly decorated two bedroom flat is located close to a wide range of amenities including Rydon Lane Retail Park, Tescos, Exeter Chiefs, David Lloyd Gym, Sowton Industrial Estate. There is also a train station which serves Exeter City Centre on a frequent basis. The RD&E Hospital is also within easy reach.

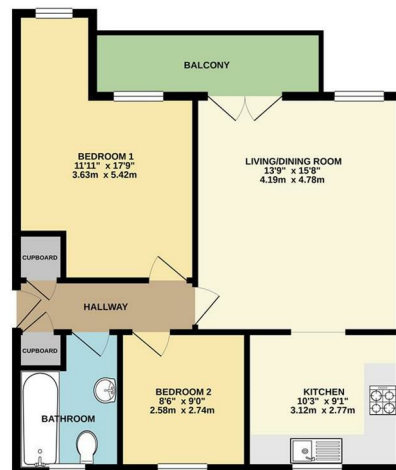
Communal entrance with stairs to the second floor. Entrance hallway with two storage cupboards, spacious living room with balcony, kitchen with space for appliances. One large double bedroom, second bedroom, bathroom with shower over the bath. To the rear is an allocated parking space.

Available immediately. Unfurnished. EER 'C'. Council Tax Band B. Allocated parking space.

Please note the floorplan is not for this exact flat but gives an indication of layout.

There is a virtual tour available as well.

FIRST FLOOR FLAT



Whilst every effort has been made to ensure the accuracy of the floorplan, measurements of rooms, fixtures, fittings and other details are approximate and should not be relied upon for any purpose other than a general guide. The floorplan is not intended to be used as a legal document. The floorplan is not intended to be used as a legal document. The floorplan is not intended to be used as a legal document.